



Whakatāne Kiwi Trust Education Programme

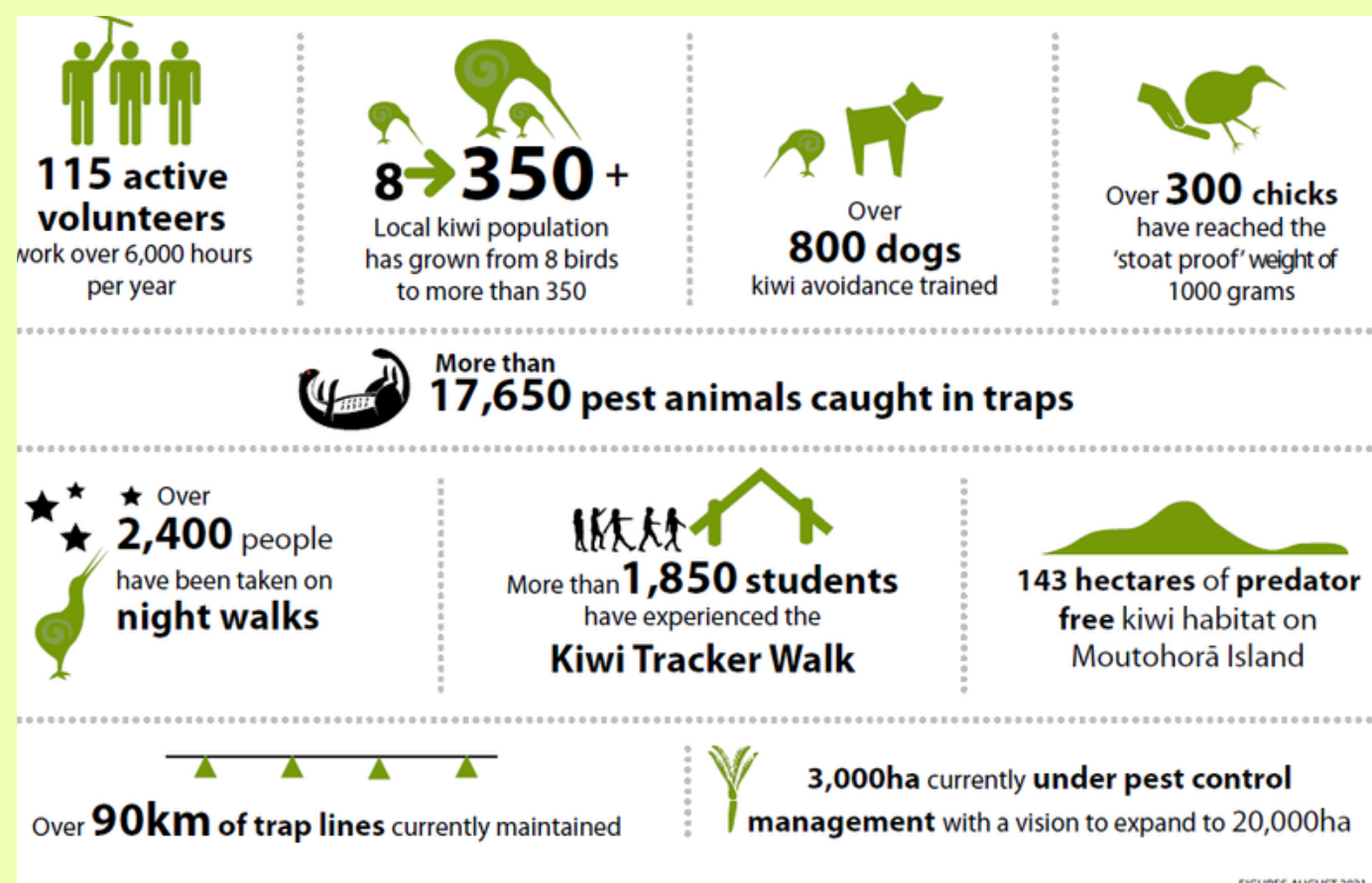
In 1999, eight North Island brown Kiwi were found unexpectedly in the Ōhope Scenic Reserve. These adult birds were the last of their local population. Without intervention, this Kiwi population, unique to the Whakatāne area, would have been lost forever!

The Whakatāne Kiwi Trust was established in 2006 to promote the protection of kiwi and other indigenous species in the Whakatāne area and Whakatāne is now the Kiwi capital of the World!!

The Whakatāne Kiwi Trust Education Programme provides a fantastic opportunity for young learners to:

- Learn about kiwi and other native forest species.
- Discover how incredibly unique New Zealand's flora and fauna is.
- Gain insight into many of the conservation challenges in Aotearoa New Zealand.
- Learn about one of the local conservation projects that is making a positive difference in their community.

At its educational core, children will be encouraged to participate as critical, informed, and responsible citizens in an environment where science plays a significant role.



Our Education Programme

- A progressive three-level conservation, science-based programme moulded around our efforts to protect our native taonga.
- Our programmes are aimed to encourage continued engagement in biodiversity and environmental conservation from Preschool through to High School.
- Based in and around the Ōhope Scenic Reserve, we offer an interactive outdoor field trip into our kiwi habitat to learn all about the biodiversity in our forest using fun, nature-related games, activities and experiential challenges.
- Over the three levels, students will actively learn all about Kiwi, their habitat, their predators, the pest control methods used, how to monitor biodiversity and will learn by immersion, how to identify the birds and the native flora and fauna found in our ngahere.
- All levels focus on tauphipuhi (interconnectedness & interdependence), kaitiakitanga and encourage a positive contribution to conservation in Aotearoa.

Our interactive mobile classroom and nature discovery hīkoi in the Ōhope Scenic Reserve offers students an abundance of exciting nature-based and practical conservation learning experiences.



Key Messages

- Tauphipuhi - interdependence - mutual dependence of living things, habits and ecosystems.
- Importance of ecological monitoring - an example of how we can practice kaitiakitanga.

Together, let's inspire our tamariki to become lifelong kaitiaki of Aotearoa!

Programme Content

Younger Students: Year 1-3

Level 1

DISCOVER THE WONDERS OF NATURE THROUGH OUR SENSES.

School visit - enjoy a Kiwi kōrero in class and get to know all about the kiwi and their forest friends.

Bush Hikoi - The Fairbrother Loop/Weta walk- Ōhope Scenic Reserve.

- Meet at Mahy Reserve for some fun nature-related activities and experience our Kiwi Education Trailer
- Go on a nature hunt to discover kiwi signs, a kiwi burrow, identify common native trees, look for weta, spiders and other insects and marvel at the interconnectedness of the biodiversity
- Look and listen for our native manu -Toutouwai (Nth Island Robin), Pīwakawaka (Fantail), Miromiro (Tomtit), Tūī, Riroriro (Grey Warbler), Kererū
- Activities include leaf rubbing, insect molding, wēta hunting and exploring the forest.



Level 2

Middle school: Year 3-5

MONITORING KIWI AND FOREST BIODIVERSITY

School visit - enjoy a Kiwi kōrero in class and an introduction to the monitoring methods used for birds, invertebrates, trees, and forest predators.

Bush hikoi: The Fairbrother Loop/ Weta walk -Ōhope Scenic Reserve

- Meet at Mahy Reserve for some fun monitoring activities and experience our Kiwi Education Trailer
- Find the Kiwi using Telemetry, use binoculars. DOC Trap demo
- Interactive bush walk - look for kiwi signs, find weta, spiders and other invertebrates.
- Identify a variety of forest monitoring equipment



Senior Students: Year 6+

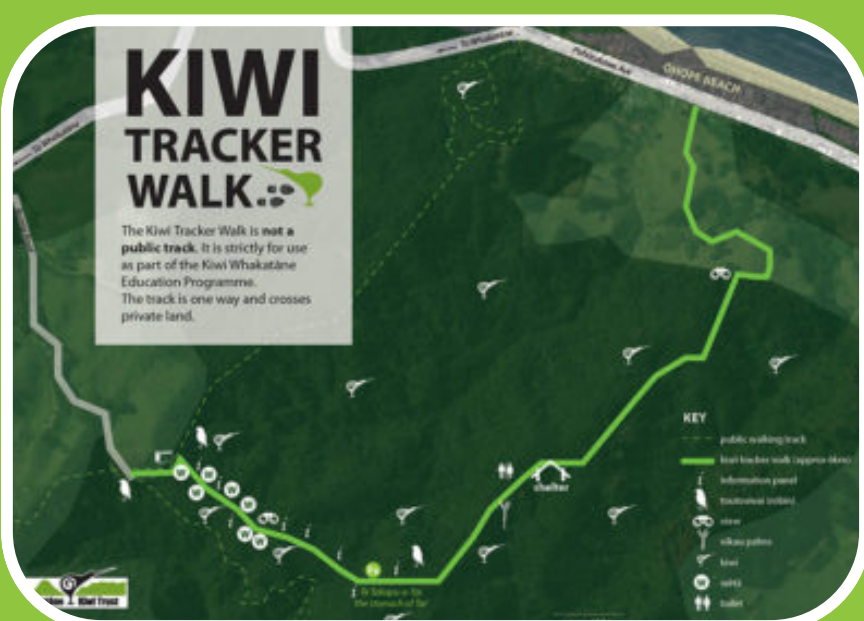
Level 3

BE A PREDATOR HUNTER

School visit: Kiwi kōrero and discussion about Predator Free 2050 and the introduced pest animals that New Zealand aims to eradicate. Learn practical skills to monitor and trap predators in our scenic reserves.

Bush hikoi: The Kiwi Tracker Walk: Ōhope Scenic Reserve

- Follow a working trap line to our educational whare deep in the ngahere.
- Assist in baiting DOC traps, checking tracking tunnels and chew cards.
- Listen and look for signs of Kiwi and other native birds.
- Use Telemetry to locate monitored kiwi.
- Learn compass/GPS navigation/binocular use.
- Search for, identify, and collect data on invertebrates.
- Identify animal footprints.



FAQ's

How many tamariki can we book to go on the field trip?

Generally, we can accommodate one class at a time - a maximum of approx. 30 students. This is because we rely on volunteers to help the Kiwi Trust Education Coordinator on the day. Smaller class sizes are ideal, as we find the children's engagement is much better with lower numbers. However, we are great at adapting our programmes for larger groups who are visiting the area on camp, so please contact us and together we can make a plan to suit! (Teachers and parents are required to help out a little with the activities in the Reserve).

How long are the programmes?

Full Programmes:

Level 1 and 2 - 1 hour (approx) class visit, PLUS approx 3 hours field trip on a different day.

Level 3 - 1 hour (approx) class visit and/or 3-4 hours Kiwi Tracker Walk experience on a different day. (Class visits are only available for local schools. For out-of-town schools we will incorporate a kiwi kōrero during the day programme).

Guided bush walk: We can also offer a shorter programme which would involve an interactive bush experience - on request - please email for details.



Do you have a RAMS form available for Health and Safety purposes?

YES we do - we want to make your trip as streamlined as possible for you! We will also send you a list of what the children will need to bring, fitness requirements, ratio numbers etc, so that everyone is prepared for the programme.

Do you have a breakdown of the activities students will do during their programme?

Indeed we do. We will send you a timetable of how the programme will roll out, but as a teacher, you will know - children are great at altering even the best-made plans !!

Are there toilets and fresh water at Ōhope Scenic Reserve?

At Mahy Reserve (Level 1 and 2 programmes) - YES there are toilets and a water fountain.

Kiwi Tracker Walk (Level 3 programme) - we have a lovely long-drop toilet near the whare, but no fresh water source is available at this site. Make sure students go to the toilet before meeting in the morning and that they bring their own drinking water.

Is there an area for students to have any 'free play' before and after the programme?

YES - at Mahy Reserve, there is a playground, and our beautiful Ōhope Beach is next to Mahy Reserve.

Is it possible to have the Kiwi Trust Educator visit the school in advance to meet the staff and children who have booked the programme? YES - If your School is local to Whakatāne, Helen is happy to pop in and introduce herself, just ask!



How much does the programme cost?

Our full Education Programme/ field trip is only a \$10 donation per student - all proceeds going towards continuing our efforts to help the Whakatāne Kiwi Trust to help our kiwi taonga survive and thrive in our local Reserves.

Shorter guided walk programmes are \$7.50/student, and we can offer a Kiwi kōrero for a koha.



GET IN TOUCH

E education@whakatanekiwi.org.nz

W www.whakatanekiwi.org.nz

f facebook.com/whakatanekiwi