



Whakatāne Kiwi Trust Preschool Education Programme

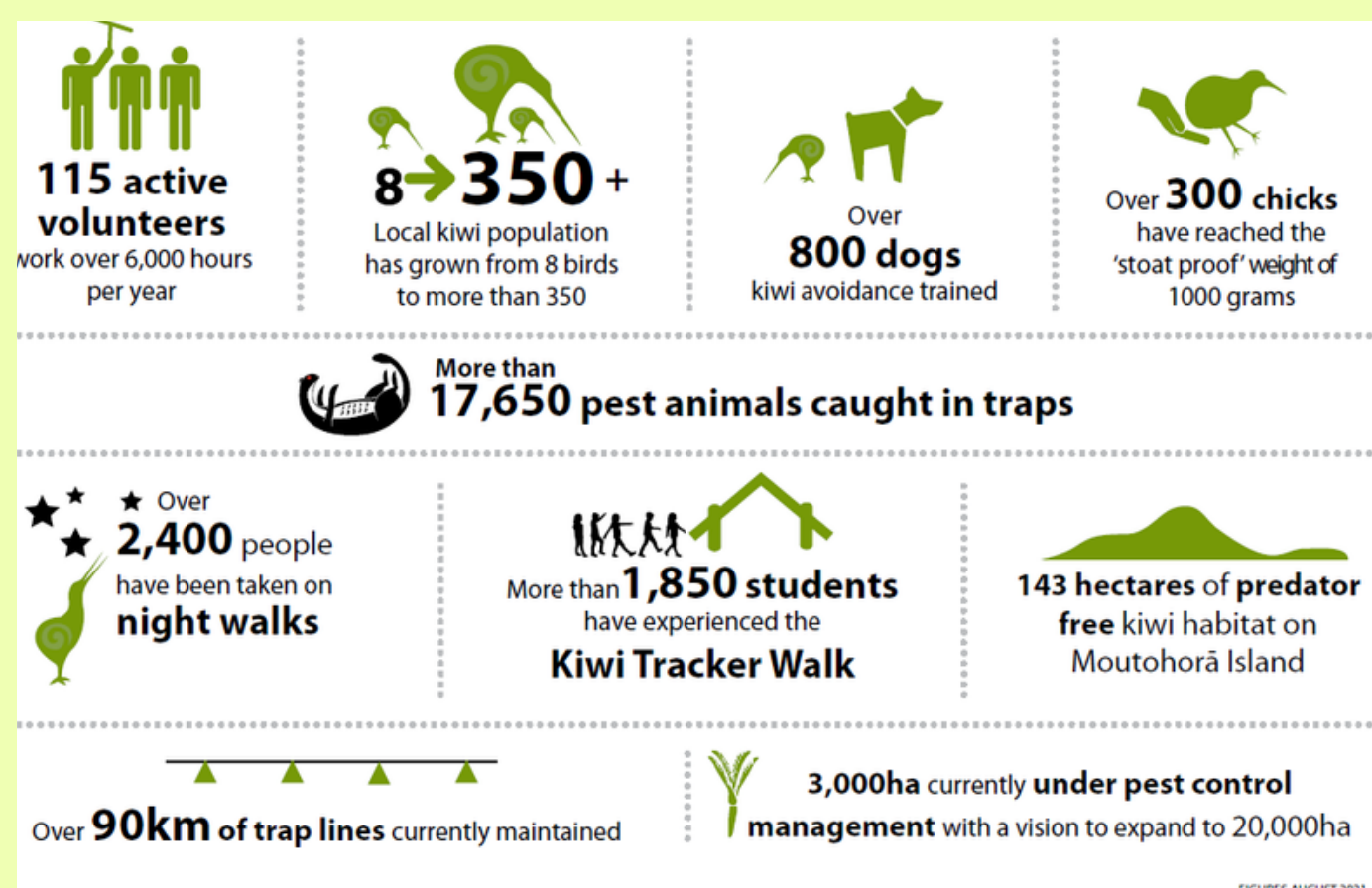
In 1999, eight North Island brown Kiwi were found unexpectedly in the Ōhope Scenic Reserve. These adult birds were the last of their local population. Without intervention, this Kiwi population, unique to the Whakatāne area, would have been lost forever!

The Whakatāne Kiwi Trust was established in 2006 to promote the protection of kiwi and other indigenous species in the Whakatāne area and Whakatāne is now the Kiwi capital of the World!!

The Whakatāne Kiwi Trust Education Programme provides a fantastic opportunity for young learners to:

- Learn about kiwi and other native forest species.
- Discover how incredibly unique New Zealand's flora and fauna is.
- Gain insight into many of the conservation challenges in Aotearoa New Zealand.
- Learn about one of the local conservation projects that is making a positive difference in their community.

At its educational core, children will be encouraged to participate as critical, informed, and responsible citizens in an environment where science plays a significant role.



Our Preschool Education Programme

- A science-based programme focused on our efforts to protect our native taonga- the Kiwi.
- Our programme is aimed to encourage engagement in biodiversity and environmental conservation from Preschool age and beyond.
- Based in and around the Ōhope Scenic Reserve, we offer an interactive outdoor field trip into our kiwi habitat to learn all about the biodiversity in our forest using fun, nature-related games, activities and experiential challenges.
- Tamariki will actively learn all about Kiwi, their habitat, their predators, the pest control methods used, and how we monitor biodiversity and will learn by immersion, how to identify the birds and some native flora and fauna found in our ngahere.
- We focus on taupuhipuhi (interconnectedness & interdependence), kaitiakitanga and encourage a positive contribution to conservation in Aotearoa.

Programme Content

DISCOVER THE WONDERS OF NATURE THROUGH OUR SENSES.

- Meet at Mahy Reserve for our Kiwi kōrero. Get to know all about the Kiwi and their forest friends and introduce why our kiwi population is under threat!
- Participate in some fun nature-related activities including insect molding, eye-spy and giant jenga.
- Go on a bush hikoi - Nature hunt on the Fairbrother track to the streambed (Ōhope Scenic Reserve).
- Discover kiwi signs and a kiwi burrow, identify common native trees, look for weta, spiders, and other insects, and marvel at the interconnectedness of the biodiversity in the bush.
- Look and listen for our native manu -Toutouwai (Nth Island Robin), Piwakawaka (Fantail), Miromiro (Tomtit), Tūi, Riroriro (Grey Warbler), Weka and Kererū .



Together, let's inspire our tamariki to become lifelong kaitiaki of Aotearoa!

FAQ's

What age is the programme suitable for?

This programme is suitable for physically capable 3- 5 year olds. We spend about 1hr in the reserve talking and completing fun activities, and then after a kai break, we head across the road to the Fairbrother loop and walk into the streambed, doing activities along the way, and then return to the Reserve. You will need to decide which children are capable of participating in this type of challenge!

How many tamariki can we book to go on the field trip?

We can only accommodate one class at a time - a maximum of approx. 25 students. This is because we rely on volunteers to help the Kiwi Trust Education Coordinator on the day. Smaller class sizes are ideal, as we find the children's engagement is much better with lower numbers. Teachers and parents are required to help out a little with the activities in the Reserve.

How long is the programme?

Approx 2-2.5 hours.

Do you have a RAMS form available for Health and Safety purposes?

YES we do - we want to make your trip as streamlined as possible for you! We will also send you a list of what the children will need to bring, fitness requirements, ratio numbers etc, so that everyone is prepared for the programme.

Do you have a breakdown of the activities students will do during their programme?

Indeed we do. We will send you a timetable of how the programme will roll out.

Are there toilets and fresh water at Ōhope Scenic Reserve?

At Mahy Reserve -YES there are toilets and a water fountain.

Is there an area for students to have any 'free play' before and after the programme?

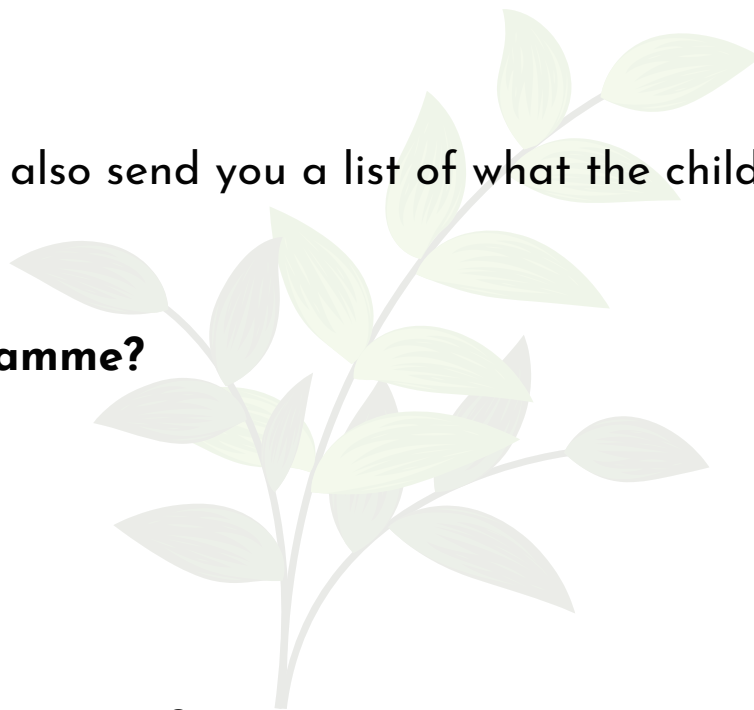
YES - at Mahy Reserve, there is a playground, and our beautiful Ōhope Beach is next to Mahy Reserve.

Is it possible to have the Kiwi Trust Educator visit the school in advance to meet the staff and children who have booked the programme? YES - If your Preschool is local to Whakatāne, Helen is happy to pop in and introduce herself!

How much does the programme cost?

We ask for a \$5 donation per child - all proceeds go towards continuing our efforts to help the Whakatāne Kiwi Trust project, helping our kiwi taonga survive and thrive in our local Reserves.

If you are not able to book a field trip, but would love your tamariki to learn about our kiwi, then we are also happy to do a Kiwi Korero at your Centre for koha



GET IN TOUCH

E education@whakatanekiwi.org.nz

W www.whakatanekiwi.org.nz

f facebook.com/whakatanekiwi