

## Things to know before you go...

- The walking trail is about 1.6km (approx. 1 hour return)
- Starts at Te Kōputu a Te Whanga a Toi – Library and Exhibition Centre and finishes at Wairaka Centennial Park (see map on reverse for route)
- There are 10 bronze kiwi to find
- Keep safe near roads and always look before crossing!

START

### #1 Manaia

**CLUE:** I love learning and reading books, my shiny egg gets me lots of looks. Find me by the front door, this is where the books are stored.

*Manaia is the first chick hatched after the Whakatāne Kiwi Project started.*

**FACT #1** Kiwi eggs are the biggest egg to body size in the animal kingdom.

**FACT #2** Kiwi eggs take around 90 days to hatch; the dad sits on the egg.

SPONSOR: WHAKATĀNE KIWI TRUST



KIWI EGG

HEN EGG



Tag your social media posts with  
**#kiwiwandering**

*Do you have what it takes to be a kiwi kaitiaki?  
Find all ten kiwi wandering through town!*



### #2 Two Toes

**CLUE:** Through the Esplanade you'll have to go, to find me putting on a show. I'm not too far, you'll soon see, you can have a seat next to me.

*Two Toes is one of the founding male birds of the Whakatāne Kiwi Project, he lost one of his toes in a ground-set possum trap.*

**FACT #3** Kiwi can live up to 40 years in the wild.

**FACT #4** Kiwi use their strong legs and feet for protection and digging burrows.

SPONSOR: DEPARTMENT OF CONSERVATION



### #3 Ahi

**CLUE:** I'm a bit further down the block, follow The Strand towards the big rock. At Wharaurangi is where I stay, watching busy people on their way.

*Ahi - the love story of Wainui, travelled almost 40km from Ōhope to Ōhiwa to find her partner.*

**FACT #5** Kiwi will wander long distances looking for their own territories or mates.

**FACT #6** Kiwi often mate for life.

SPONSOR: WHAKATĀNE - ŌHOPE COMMUNITY BOARD



### #4 Miro

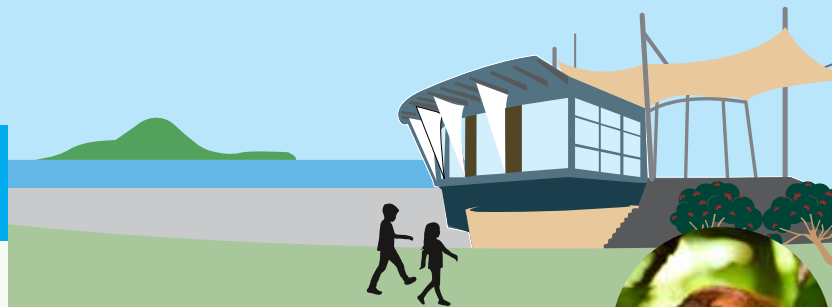
**CLUE:** Carry on along The Strand, it's not too far to where I stand. Look under the seats, and then you'll see, but please don't sit on top of me.

*Miro was the first chick from the Omataroa Kiwi Project at Te Teko to come to Whakatāne. Omataroa Kiwi Project and the Whakatāne Kiwi Trust work together to help kiwi.*

**FACT #7** 95% of kiwi chicks in unmanaged areas are killed by predators in their first few months of life.

**FACT #6** Stoats are the primary predator of kiwi chicks in the wild.

SPONSOR: WHAKATĀNE - ŌHOPE COMMUNITY BOARD





**Who's ready for a selfie?**  
Tag your social media posts #kiwiwandering

### #5 Big Al

**CLUE:** Need to book a plane or bus? This place helps you with no fuss! Information is their game, it even says it in their name!

*Big Al was one of the founding adult males of the Whakatāne Kiwi Project – check his leg to see a transmitter.*

**FACT #9** The Kiwi Trust uses transmitters to monitor our kiwi.

**FACT #10** Transmitters have to be changed every 12 months because their batteries run out.

SPONSOR: AIR CHATHAMS

### #9 Pea

**CLUE:** Keep on along the riverside, to where the waka reside. You won't find me sitting in the canoe, but just nearby will have to do.

*Pea is the first kiwi chick to hatch and grow-up naturally in the wild for the Whakatāne Kiwi Project.*

**FACT #17:** The Whakatāne Kiwi Project has hundreds of traps and kms of trapline. We do this to protect kiwi chicks so they can hatch and grow-up naturally in the wild.

**FACT #18:** Juvenile kiwi can wander great distances looking for their own territory.

SPONSOR: WHAKATĀNE - ŌHOPE COMMUNITY BOARD

### #10 Te Hau

**CLUE:** Almost done, I'm the last bird! And I really like to be heard. See me calling nice and loud, I'm sure to gather quite a crowd. The playground is the place to be, full of kids and down by the sea.

*Te Hau, named after Te Hau o te Rangi (Ching) Tutua, was the very first bird of the Whakatāne Kiwi Project, he has had many chicks and was a great dad.*

**FACT #19:** Kiwi call most often in the months of April, May and June when they are looking for partners.

**FACT #20:** Male and female kiwi calls sound very different!

SPONSOR: WHAKATĀNE - ŌHOPE COMMUNITY BOARD

*Are you ready for another kiwi adventure? Go on a night walk in Ōhope Scenic Reserve – details and a self-guided walk map can be found at [whakatanekiwi.org.nz/night-walks](http://whakatanekiwi.org.nz/night-walks)*

### #6 Ōhope

**CLUE:** Walk along the river now, you'll find me soon I'll tell you how: look on the wall beside the seat, the Regional Council thinks I'm neat.

*'Ōhope' hatched, grew-up, and stayed in Ōhope Scenic Reserve. He now has a territory on the Fairbrother Loop.*

**FACT #11** In 1999 only 8 kiwi were found remaining in Ōhope Scenic Reserve.

**FACT #12** Ōhope Scenic Reserve is one of the last remaining pōhutukawa forests in New Zealand.

SPONSOR: BAY OF PLENTY REGIONAL COUNCIL

### #7 Waewae

**CLUE:** You'll have to leave the river to find me, I'm in front of the wharenuī. I love listening to the kaikaranga on the marae, I'm next to the road named Muriwai.

*Waewae was one of the founding female birds of the Whakatāne Kiwi Project.*

**FACT #13** Female kiwi are bigger and heavier than male kiwi.

**FACT #14** Female kiwi have longer bills than male kiwi.

SPONSOR: NGĀTI AWA GROUP HOLDINGS LIMITED

### #8 Kaputerangi

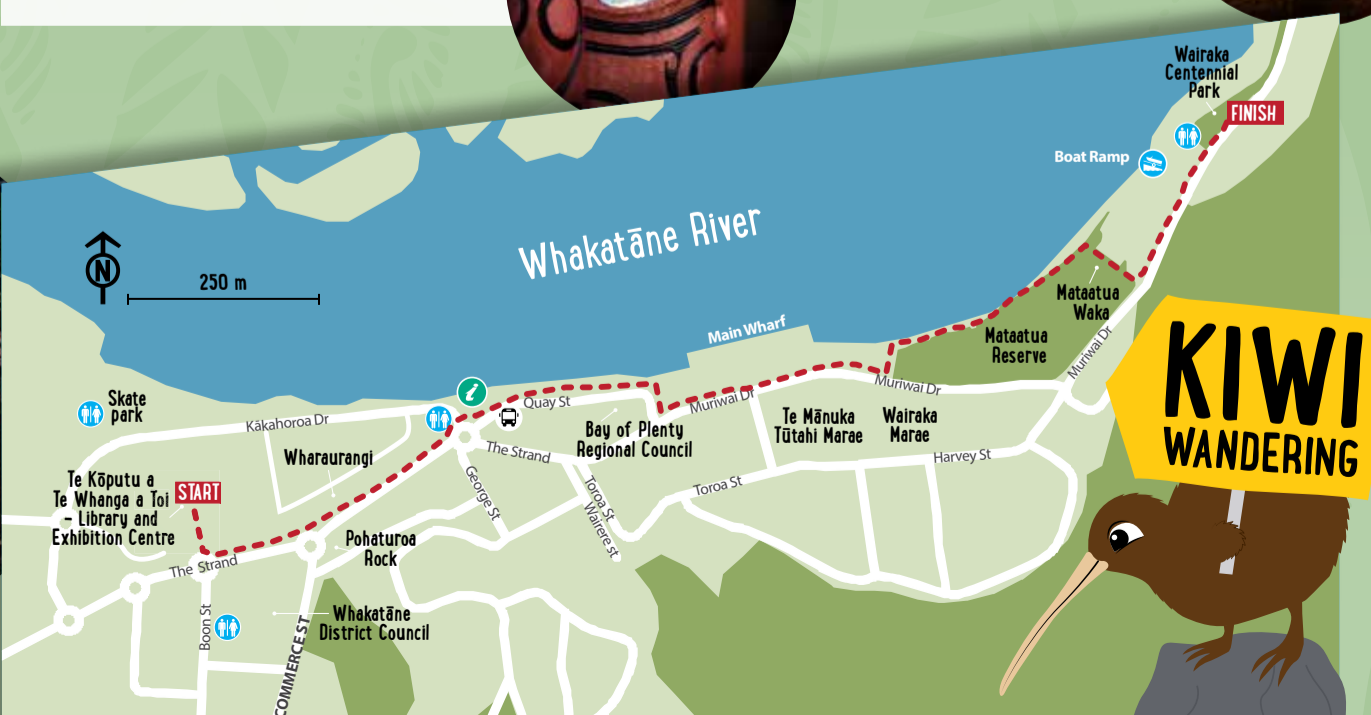
**CLUE:** Go back along the river trail, and walk towards the Heads, you cannot fail. Look around the steps to see, my hiding place so come find me!

*Kaputerangi is the 100th chick for the Whakatāne Kiwi Project and named after the famous pā site of Toi above the town.*

**FACT #15:** Once kiwi chicks hatch they have to fend for themselves.

**FACT #16:** Worms are one of the main food sources for kiwi.

SPONSOR: WHAKATĀNE - ŌHOPE COMMUNITY BOARD



This brochure was funded by:

